

SR-500LX



<http://www.kato-works.co.jp>

- Before you use the crane, study the instruction manual thoroughly and follow the instructions it contains.
- Some differences may arise between the machine delivered and the photographs in the catalog due to the country the crane will be used in or any added improvements.
Note : The specification may be changed without notice.
- The actual colors of the body and interior may appear slightly different from those shown in this catalogue due to the limitations of photography and printing.

● Contact for enquiry:



C03271
9.2019-2000(FB)1 Printed in Japan

SR-500LX

9-37, Higashi-ohi 1-chome, Shinagawa-ku, Tokyo, 140-0011, Japan / Tel.: Head Office: Tokyo +81 (0)3 3458-1111 Overseas Marketing Department: Tokyo +81 (0)3 3458-1115 / FAX: Tokyo +81 (0)3 3458-1163

SR-500LX

Rough Terrain Crane

Maximum lifting capacity: 51t×2.5m

Maximum boom length: 42.0m



KATO



5-section 42m long Boom



42m

- **Boom lifting capacity** **SUPERBOOM**
- Maximum lifting capacity..... **51t×2.5m**
 - Boom length..... **10.8m~42m**
 - Maximum lifting height..... **43.2m**
 - Boom derricking angle..... **0°~84°**
 - Maximum lifting capacity at maximum boom length..... **8.0t**

2 types of telescoping modes are available



◀ **Mode A**
Strong lifting performance
Only the 2nd section is telescoped. Followed by a synchronous extension of sections 3, 4, and 5.



◀ **Mode B**
Stable lifting performance
Simultaneous telescoping of the 3rd, 4th and 5th sections. Next is extension of the 2nd section.

No-Jib lifting capacity is available

10.8m

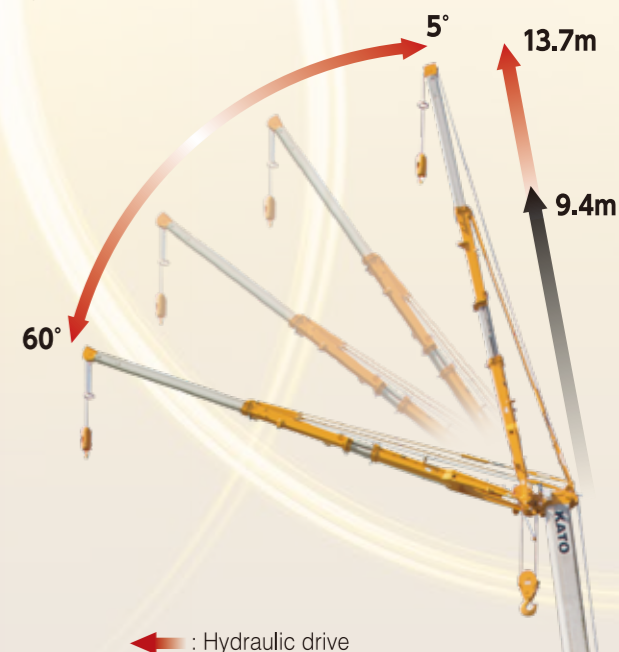
84°

■ Tail slewing radius **3.9m**

at 26.4m boom **9.2m**

at 10.8m boom **7.5m**

8.6m



Simple mounting hydraulic telescoping/luffing Jib
Easy and user friendly mounting mechanism

Short time

Only 2 times outside work.

Small space

Less space for Jib deployment.

Safety improvement

All works will be completed on the carrier and ground.

No boom length limit for Jib deployment

It is able to avoid obstruction at Jib deployment by controlling the boom length as necessary.

● **Jib lifting capacity** **SUPERJIB**

- Maximum lifting capacity..... **4.2t×72°**
- Jib length..... **9.4m~13.7m**
- Maximum lifting height..... **57.1m**
- Jib offset angle..... **5°~60°**



2 air conditioner ducts adopted on the front left and right side

And with a new configuration, one more has been added to the leg area.



K·COR



- The K·COR is data logger system which records working status of crane. Data is extractable by the SD card and can be confirmed through K·COR program.



▲ Multiple view colour Monitor

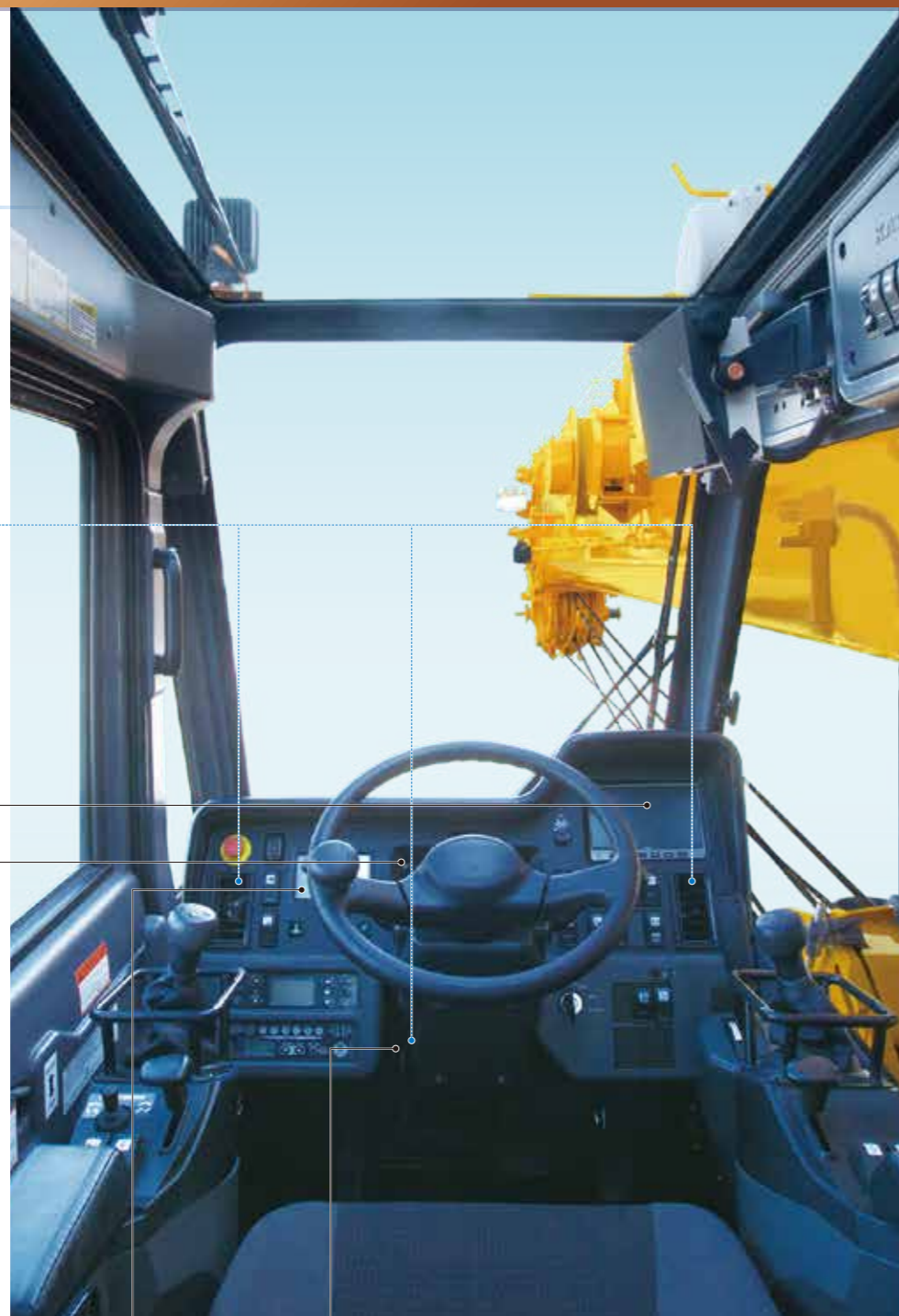
▼ Liquid crystal display cluster meter



(Travelling mode)



(Crane operational mode)



● Front leg-room air-conditioner duct

Touch screen COR information display



- The screen displays the fuel consumption, operation time, etc. and effectively improves energy saving.
- With the ECO switch, the max engine speed can be adjusted for optimum work engine speed during crane operation.
- With adoption of the Auto-Minimum Control, the hydraulic pump outlet and fuel consumption are greatly reduced during non-operation.
- Crane leveling is made easier by the newly developed electronic leveling function.



- New joystick lever
 - 6 button
 - Vibration function equipped
- New hydraulic pilot valve
 - Now in short stroke



- Lever guide
 - Supports fine operation
 - Fatigue reduction
- At hand switch arrangement improves operability



(Armrest with tele-tilt)

- Step less adjustable sun shade

New ACS moment limiter now with high resolution display

A range of limiting functions to increase Safety during Operation.



Load factor

- It limits the load factor to 80% ~ 100% of the rated lifting capacity and keep a safe margin.

Working range limit

- It can be setup to limit 2 vertical surface range to avoid collision, hence improving safety of operation.



▲ Seat with suspension and double slide

▼ New console



(Easier boarding thanks to larger tilting angle)

For various operation



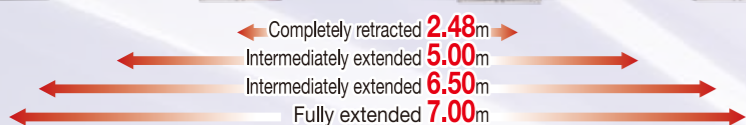
Balloon tire is selectable

Balloon tires (option) secure stable travelling at off-road ground.



4-position outriggers

Ensure safe and stable operation by 4-position outriggers.



GVW is 37,075kg with radial tire. Tow hooks are equipped on the front frame. Enable to transport efficiently.

GVW : 37,075 kg
*At radial tire traveling position.



Reliable Mitsubishi engine

● Model: Mitsubishi 6M60-TL
(Electronically controlled Common-rail type)

- Piston displacement..... 7.545L
- Max power..... 200kW / 2,600min⁻¹
- Max torque..... 785N·m / 1,400min⁻¹



Progressive features



▲ Colour monitor



▲ USB socket



▲ Accessory socket



▲ Ash tray (option)



▲ Drink holder



▲ Loud speaker



▲ Side view camera (Left)



▲ Bridge device switch



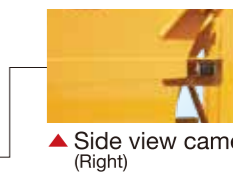
▲ LED ACS outside indicator



▲ LED working light



▲ Anemometer (option)



▲ Side view camera (Right)



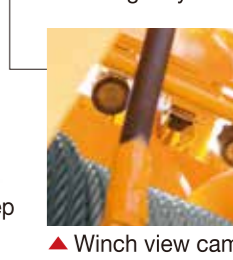
▲ LED head light with Hi and Lo selector



▲ Electrically retractable side view mirrors



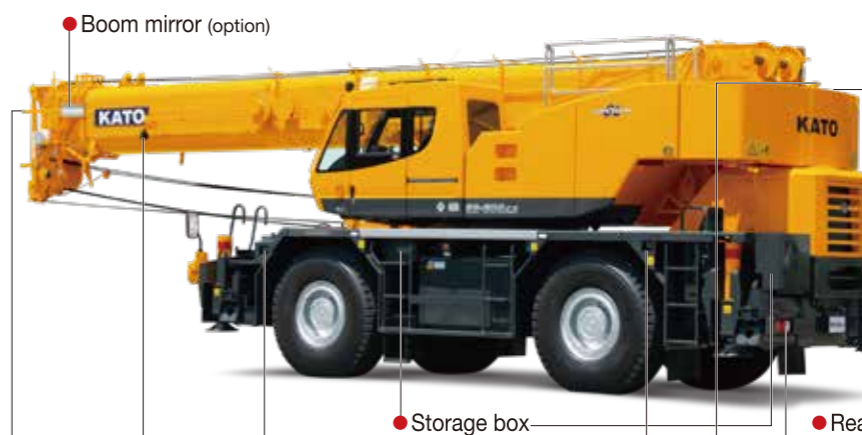
● Mirror heater (option)



▲ Emergency switch



▲ Winch view camera



▲ LED working light (boom)



▲ LED working light (outrigger)



▲ Rear view camera



▲ LED combination rear light